

THE JOURNEY TO ME: A SEA DRAGON ADVENTURE

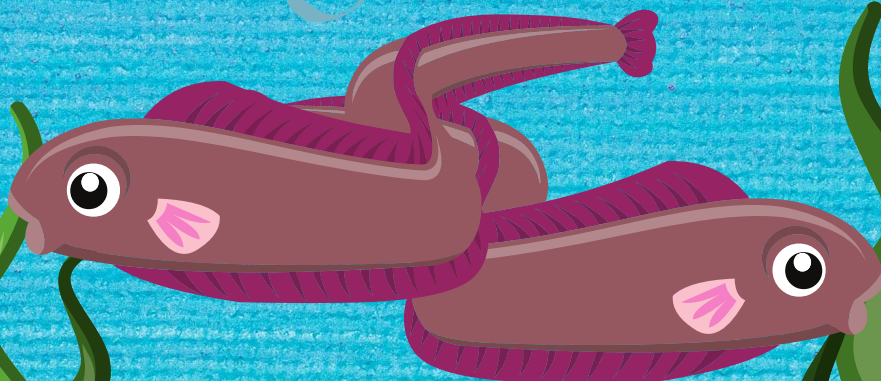
A VIRTUAL TVY EXPERIENCE

MAKE YOUR OWN:

EEL HAND/ARM PUPPETS!

WANT TO ROCK OUT WITH YOUR OWN EEL PUPPETS?
NOW YOU CAN WITH THIS HELPFUL GUIDE!

PUPPET DIFFICULT LEVEL:
INTERMEDIATE



PUPPET TERMINOLOGY

**HELPFUL WORDS TO KNOW WHEN
TALKING ABOUT PUPPETS!**

Since there are many different types of puppets that exist in the wonderful, wide world of puppetry it can get confusing when you try to remember what they all are and do! Below is quick list of the different puppets we used in this show and how they are used!

Puppet

Any object that given motion, emotion, and life.

Puppeteer

A special name given to the person in charge of giving a puppet motion, emotion, and life! The "puppet actor."

Rod or Stick Puppet

This type of puppet is often made with a rod or stick poking out of it. This stick/rod helps the puppeteer control and animate the puppet! This puppet can be controlled from below or above.

Marionette Puppet

A puppet that is brought to life using strings attached to the joints (often the knees, elbows, hands, feet, and head) of a puppet. It is controlled from above.

Hand/Arm Puppet

This type of puppet often comes in glove form (or has a glove built into the puppet where the puppeteer controls it just using their arm or hand.

Full Body Puppet

This puppet can either come in the form of a costume or large scale puppet of any of the puppets mentioned above, but is controlled using the puppeteer's whole body. (Think Big Bird!)

Shadow Puppet

This is often a type of stick puppet is often a cut out piece of paper, cardboard, or sturdy piece of material and attached to a stick or wooden dowel and controlled using a screen or black surface and light source that helps create the shadow! It can be controlled from below or above.

MAKE EELS!

HAND/ARM PUPPETS

EEL MATERIALS

- Sweatshirt/long sleeved t-shirt
- Needle and thread (get a grown up to help) or heavy duty glue
- Beads or buttons
- Feathers, sequins, pipe cleaners, or any other additional decoration

In the show the Eels is portrayed by puppets and actor, Jessica Burrill-Logue -- made of old sweatshirt sleeves and creative spark! Below are some materials and ideas on how bring your own Eels to life at home (or in the classroom)!

EEL TUTORIAL

- **Step 1:** With a grown-ups help, cut sleeves off of an old long sleeved t-shirt or sweatshirt.
- **Step 2:** Using a needle and thread or heavy duty glue, seal or sew the "mouth" of your eel shut (with grown-up help or supervision)
- **Step 3:** Attach buttons or beads where you think the eyes should go.
- **Step 4:** Give you eel personality by using feathers, seauins, or any other decoration you have lying around to decorate them!
- **Step 5:** Try your new puppets out by putting them on your arms/hands and have them swim and dance about!

